

Storm Brakes

Rail Clamps
Rail Brakes
Rocker Rail Brakes
Wheel Brakes
Thruster Wheel Chocks
Thruster Rail Brakes



Rail Clamps



Rail Brakes

Thruster Disc Brakes

M16 Series	PKM Series	Series Couplings
M23 Series	GKM Series	Series Couplings
M28 Series	RKM Series	Series Couplings
M37 Series	RKSM Series	Series Couplings
HSB Series	SD Series	Series Discs



Thruster Disc Brakes



Couplings & Discs

Thrusters

ES 025 Series	ES 121 Series
ES 030 Series	ES 201 Series
ES 050 Series	ES 301 Series
ES 080 Series	ES 401 Series



Thrusters



Industrial Disc Brakes

HSV 200 Series	Series	HCB 150 Series	Series
HSV 300 Series	Series	HCB 240 Series	Series
HSV 3000 Series	Series	HCB 6000 Series	Series
HSV 5000 Series	Series		



Industrial Disc Brakes



Hydraulic Power Units

HPT 10 RC Series	Series
HPT 10 Series	Series
HPT 30 Series	Series
HPT 50 Series	Series
PU 6 Series	Series



Hydraulic Power Unit
Stainless Steel Series
with Enclosure



Hydraulic Power Unit
Stainless Steel Series
without Enclosure

Cable Reels

Cable Reels	Magnetic Coupling Drives
Hose Reels	Magnetic Eddy Drives
High Speed Reels	Cable & Hose Guides
Level Wind Reels	Gear Boxes
Lift & Store Reels	Sliprings & Enclosures
Vertical Column Slip Rings	Anchoring Equipment
Fibre Optic Rotary Joints	



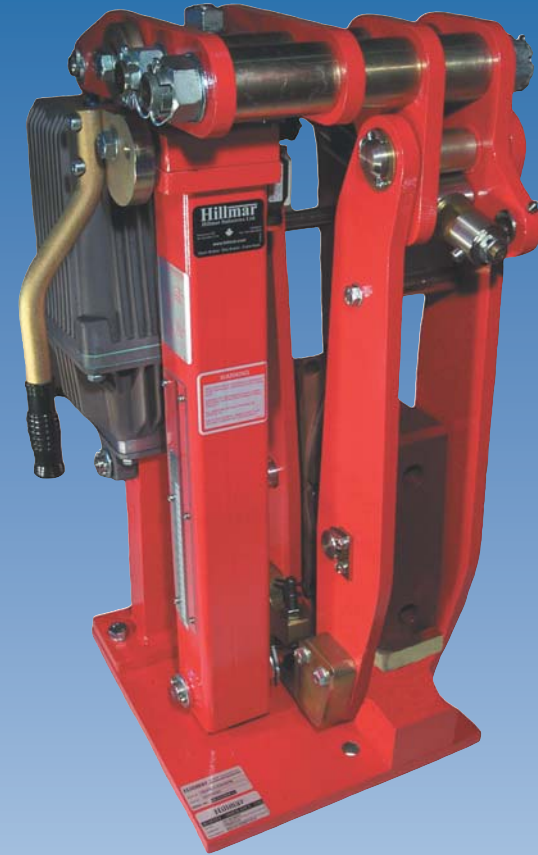
Level Wind Control Cable Reel

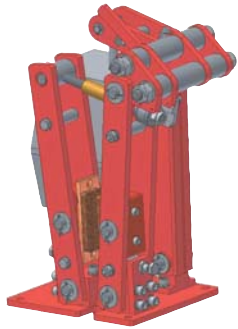


Cable Reel Lift & Store System

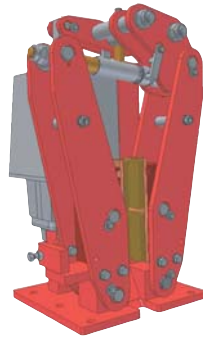


THRUSTER DISC BRAKES - M SERIES

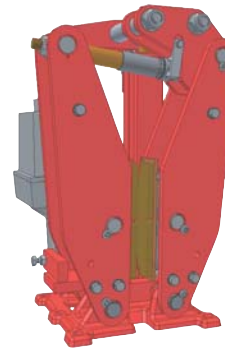




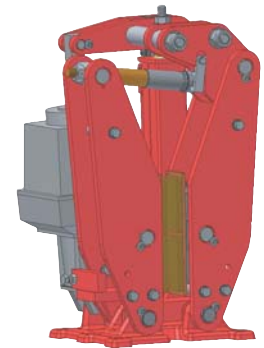
M16 Series



M23 Series



M28 Series



M37 Series

Design Features

Actuators can be installed horizontally for industrial vertical motor applications like slewing.
 Simple adjustment of ample air gap between brake pads and disc.
 Sintered metal asbestos free pads for high speed applications.
 Enclosed adjustable brake spring with torque scale.
 3-phase AC Thruster actuator for brake release.
 Self-lubricating bushings used at all pivot points.
 Stainless steel spindles used throughout for corrosion protection.
 All component parts designed for maximum durability.
 Brake speeds comparable to magnetic brakes.
 Two position manual release mechanism.

Automatic Centering Device

Hillmar's M Series Thruster Disc Brakes use a unique mechanism to ensure that the friction linings lift off equally on either side of the disc regardless of disc wear. The twin brake levers are synchronized by a simple mechanism that ensures that they move equally. Although some other brakes use synchronization to accomplish equal pad lift off, the Hillmar device is unique in that it can be easily adjusted after installation. With other brakes the entire brake mechanism must be shifted side to side to set the initial friction lining to disc clearance. With Hillmar's M Series brakes, the brake can remain bolted in place and final precision centering can be accomplished by adjusting the simple mechanism. No further adjustments need to be made until the friction linings are fully worn and replaced.

Quality and Service

Brakes are only as safe as the servicing and maintenance performed on them while they are in operation. With a substantial number of disc brake installations throughout the world, our comprehensive parts and service organization is always available to ensure the safe, reliable and precise functioning of our M Series Thruster Disc Brakes.

Available Options

- Automatic wear compensator.
- Limit switch to indicate lining wear.
- Brake release limit switch.
- Thruster position limit switch.
- Manual release limit switch.
- Disc and/or hubs (see coupling brochure).
- Long stroke actuators for special applications.
- Brake lining temperature sensors.
- VSR electronic brake monitoring system.
- Self-centering mechanism.

Applications

High Duty Cycle Operation on equipment such as:

- Container Cranes
- Stacker reclaimers
- Gantry cranes
- Hoists
- Ship unloaders
- Portal cranes
- Conveyors
- Winches

Hillmar will, upon request, supply detailed data sheets to obtain necessary specific sizing information and make the appropriate product recommendations.
 Hillmar has a full range of spare parts in inventory.
 A complete set of O & M manuals are supplied with all products.

**Capacity Chart
 Braking torque ($\mu=0.4$)**

DISC Ø	TDB- M16 ES-25	TDB- M16 ES-30	TDB- M23 ES-60	TDB- M23 ES-80	TDB- M28 ES-201	TDB- M28 ES-301	TDB- M37 ES-401
mm	Nm						
250	200	270					
280	230	310					
315	260	355					
355	300	410	935				
400	345	470	1085	1800			
450	395	540	1255	1850	7100		
500	445	610	1425	2100	7100		
560			1630	2400	5500	5750	
630			1870	2750	4400	6600	9700
710					4700	7600	11200
800					5400	8800	12800
900							14700
1000							16500
1250							21100
							33600



Self Centering Mechanism

The Hillmar M Series Thruster Disc Brakes are powered by the Hillmar ES Series Thruster Actuators.

The ES Series Actuator was designed by Hillmar's highly skilled engineering staff. Thruster Actuators have become the device of choice for the reliability of brakes. Our thrusters have more capacity and provide better performance than any other thrusters on the market today.

The ES Series Thruster is AC driven and is available in any voltage configuration required. All thrusters are thoroughly inspected and tested to the highest of quality standards.



All M Series TDB's are powered by the Hillmar ES Series Thrusters